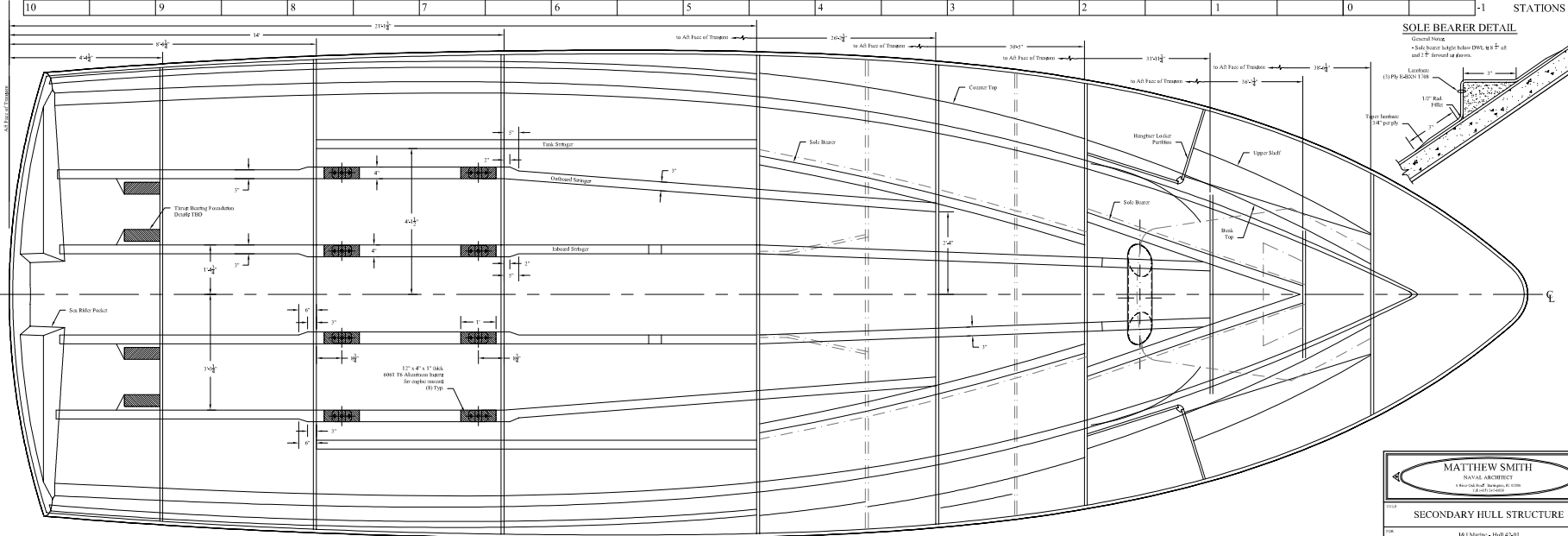
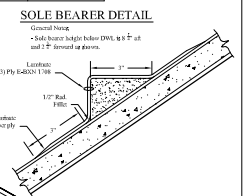
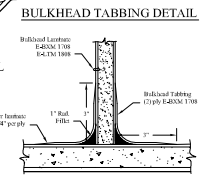
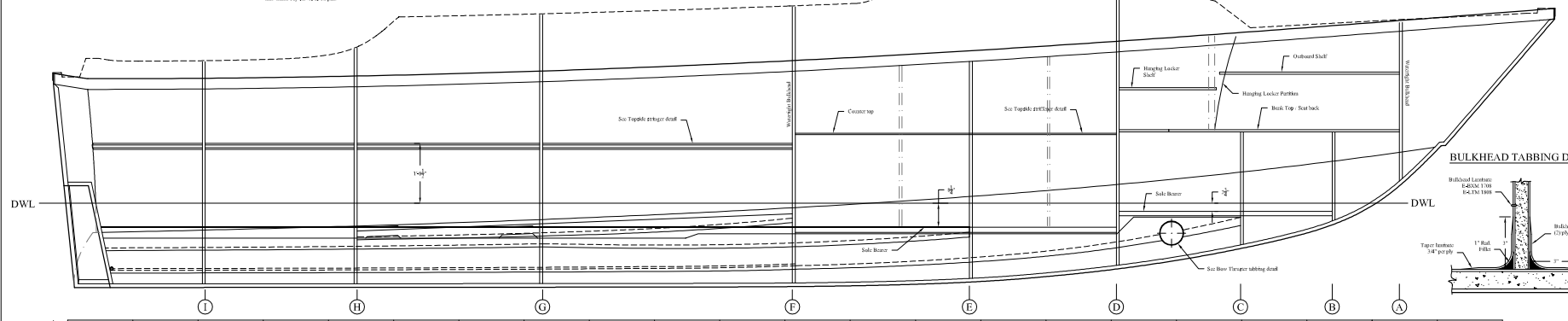
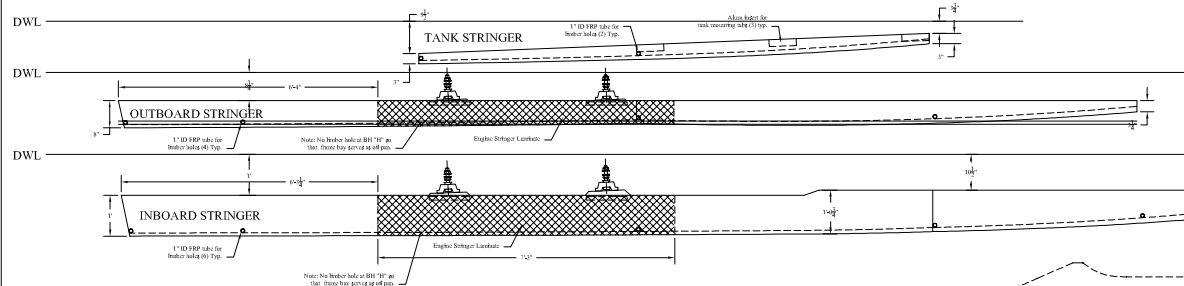
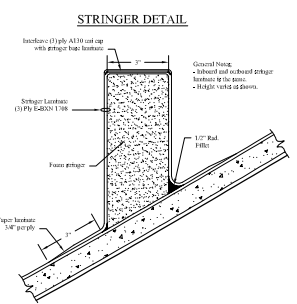
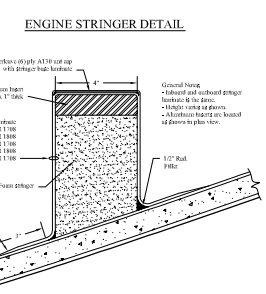
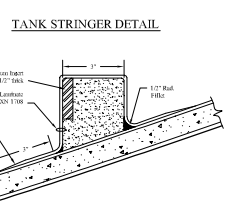
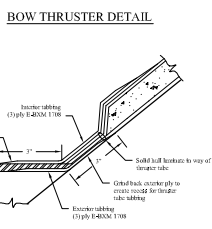
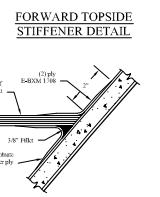
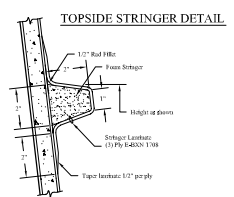


REVISIONS		
No.	DESCRIPTION	DATE
1	Scale base drawn, bulkhead detail and engine	8/18/07



MATTHEW SMITH
NAVAL ARCHITECT
A Professional Engineer in the State of Florida

SECONDARY HULL STRUCTURE

882 Marine - Hull 4301

DRAWN BY: DATE: August 28, 2007
 CHECKED BY: DESIGNED BY: DATE: 8/18/07
 SCALE: 1/4" = 1'-0" (1/8") DWG. NO. 104402