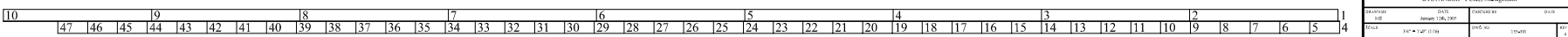
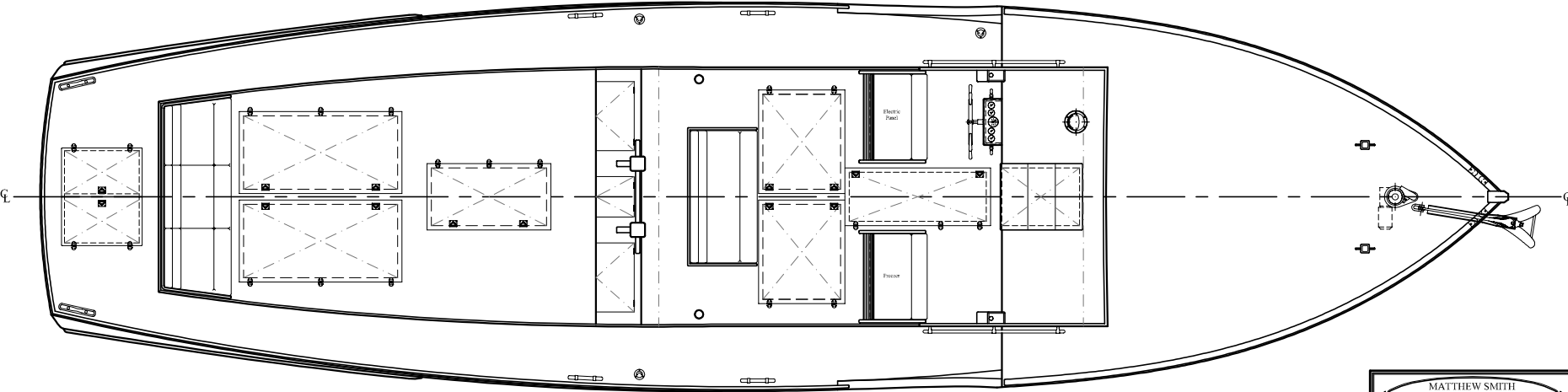
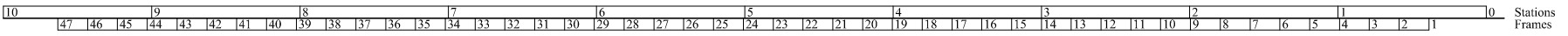
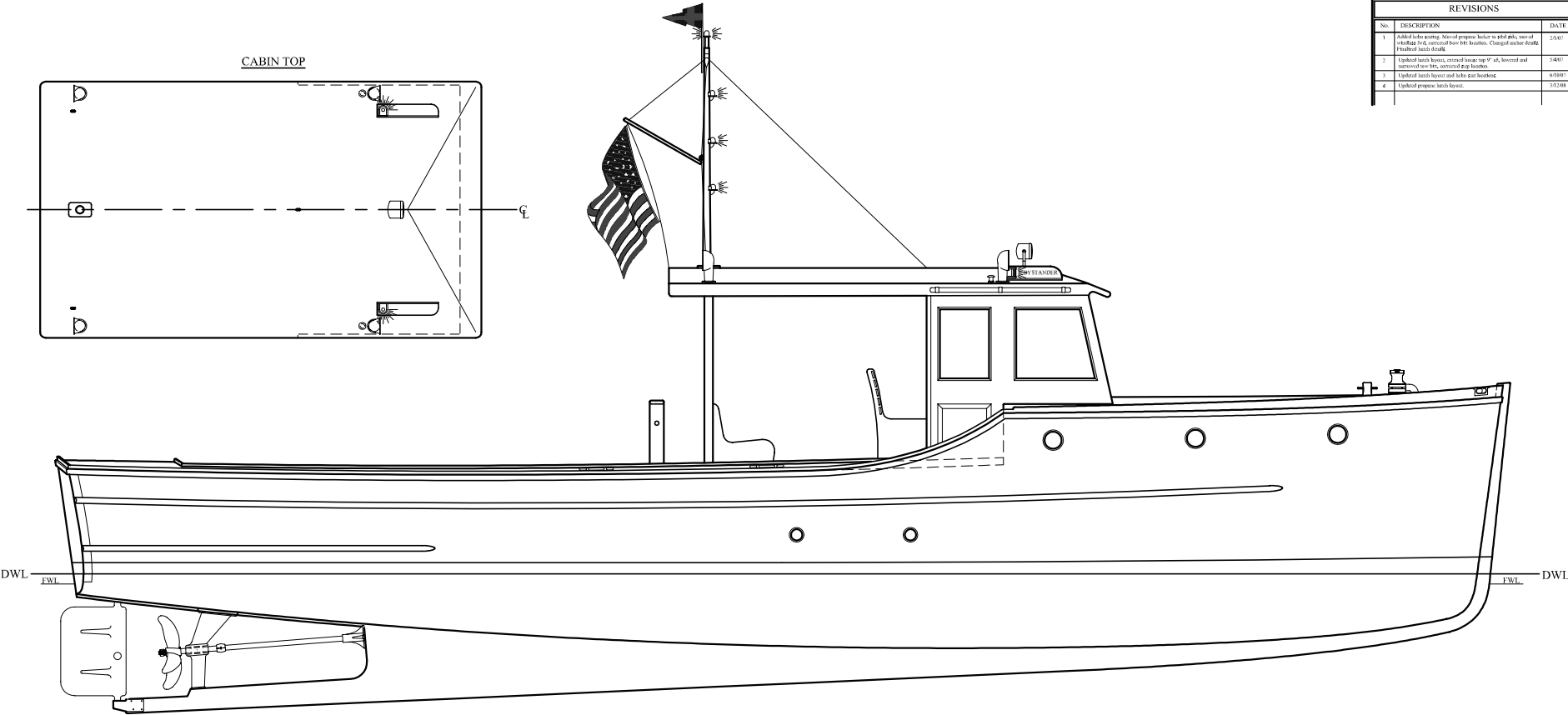
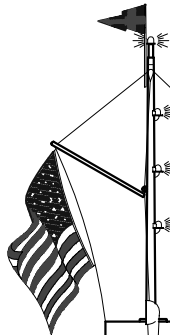
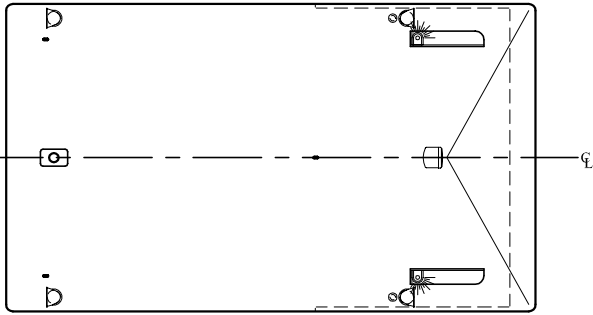


REVISIONS		
No.	DESCRIPTION	DATE
1	Added hatch opening. Moved propane locker to PHH side, rear of hull and added fuel, vented hose BH location. Changed anchor detail. Finished hatch detail.	2/14/07
2	Updated hatch covers, moved lounge up 1" at bow and corrected seat 180, corrected rig handle.	3/4/07
3	Updated hatch frames and table post location.	6/16/07
4	Updated propane hatch layout.	3/12/08

CABIN TOP



**MATTHEW SMITH**  
NAVAL ARCHITECT  
A Professional Architect in Florida

---

**DECK PLAN and PROFILE**

BYSTANDER • F-Class Management

DRAWN BY JAMES DUNN	DATE JANUARY 2007	CHECKED BY MATT SMITH	DATE MAY 2007
SCALE 1/4" = 1'-0"		DWG. NO. 159-001	